

52 Limpsfield Avenue, Thornton Heath, CR7 6BE



3



1



2

£409,950

Cromwells
ESTATE AGENTS



52 Limpsfield Avenue

Thornton Heath, CR7 6BE

£409,950

NO CHAIN! CASH BUYERS ONLY. A fantastic chance to acquire this spacious 3 bedroom terraced house with 2 receptions, kitchen, conservatory, ground floor WC, first floor bathroom, gas central heating, mostly double glazed, scope for off street parking (Subject to local authority consents) and a good size garden. This property needs refurbishment and has plenty of potential to extend (STC)

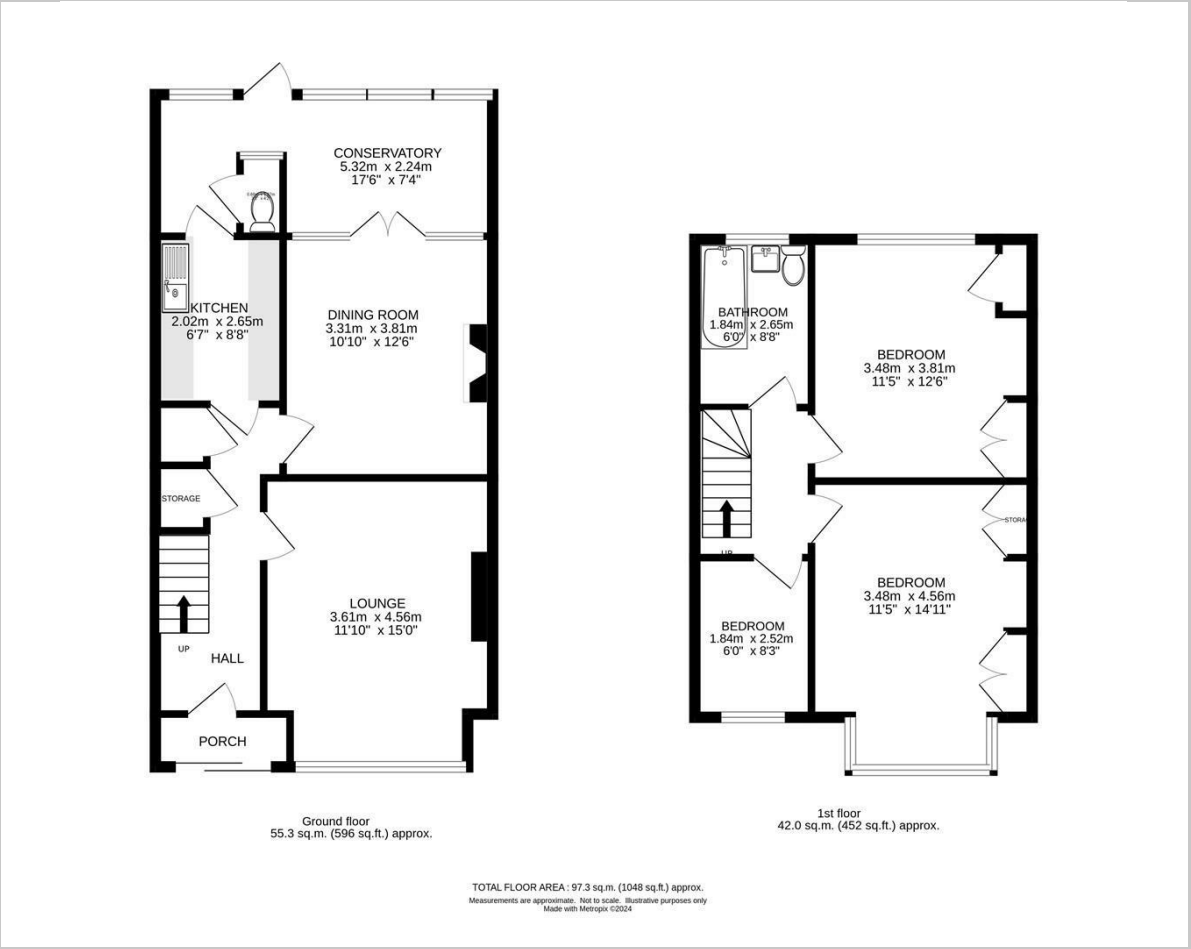
Located for easy access to transport links, popular schools, local high street shops, restaurants and more.

EPC rating C. Council Tax Band D





Floor Plan

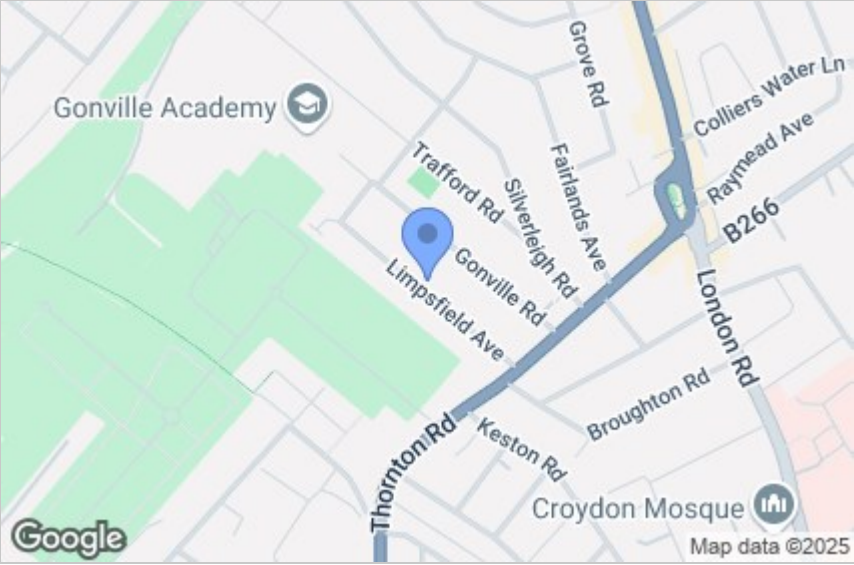


Viewing

Please contact our Cromwells Office on 0208 647 4422 if you wish to arrange a viewing appointment for this property or require further information.

These particulars, whilst believed to be accurate are set out as a general outline only for guidance and do not constitute any part of an offer or contract. Intending purchasers should not rely on them as statements of representation of fact, but must satisfy themselves by inspection or otherwise as to their accuracy. No person in this firms employment has the authority to make or give any representation or warranty in respect of the property.

Area Map



Energy Efficiency Graph

